

Afghan National Army (ANA)

ROHIT SINGH

Current Strength of the ANA

The Afghan National Army reached its previous goal of 134,000 troops in July 2010. The current goal is to have 171,600 by October 2011. As of March 2011, there were 160,000 troops on its rolls, 4,000 ahead of the March goal.

ANA Organisation

As part of its continuing drive toward self-sufficiency, the Afghan National Army created the Ground Force Command (GFC) headquarters. GFC commands the six ANA corps plus the 111st Capitol division. The GFC is modeled on the International Security Assistance Force's Joint Command and is commanded by Lieutenant General Murad Ali Murad. The GFC is scheduled to reach initial operational capability by March 2012 and full operational capability by August 2012.

In May 2010, Regional Command -South (RC-S) was split into two regions. The newly created Regional Command-South West (RC-SW) and its 215th Corps took over the provinces of Helmand and Nimroz, and portions of Farah. RC-S and its 205th Corps retained Zabul, Kandahar, Uruzgan, and Daikundi provinces.

Afghan National Security Forces (ANSF)

The major subunits of the ANSF are the following.

Afghan National Army (ANA)

National HQ – Kabul

National Commando Brigade – Kabul

111st Division – Kabul

201st Corps – Kabul 203rd Corps – Gardez 205th Corps – Kandahar 207th Corps –

Herat 209th Corps – Mazar-e-Sharif 215th Corps – Lashkar Gah
Afghan National Police (ANP) Afghan Uniformed Police (AUP)
Afghan Border Police (ABP) Afghan National Civil Order Police (ANCOP)
Criminal Investigation Division
Counter Narcotics Police of Afghanistan (CNPA) Afghan Public Protection Force (APPF)
Afghan National Army Air Corps (ANAAC)
ANAAC Headquarters – Kabul
Kabul Air Wing
Kandahar Air Wing
Shindand Air Wing (planned)
Jalalabad Detachment
Mazir e Sharif Detachment
Gardez Detachment
Herat Detachment

ANA Special Operations Command Brigade

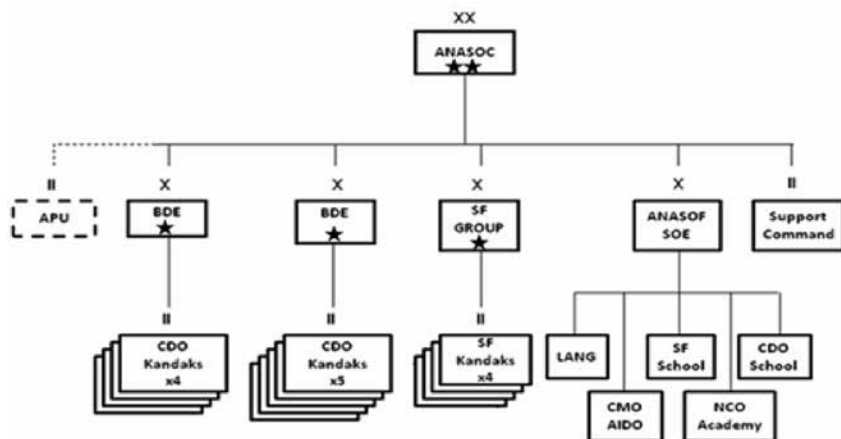
The ANA has established a new Special Operations Forces organization. The newly established Afghan Special Operations Command (ANASOC) is setting up a division headquarters at Camp Moorehead in Wardak province. It will command two different types of units, the existing ANA Commandos and a newly formed unit, the ANA Special Forces (ANASF).

The ANA Commandos are the ANASOC's "direct action" force. The existing nine Commando battalions will eventually be organized into two Commando brigades. However, the current 1st Commando brigade headquarters was dissolved in order to provide a cadre to staff the new ANASOC division headquarters. A new 1st Commando Brigade headquarters staff is being trained and will be operational soon. The 2nd Commando Brigade headquarters is planned to be operational by September 2011.

The ANASOC will also command the 1st Special Forces Brigade. Modeled on the US Special Forces, the brigade's missions will include "internal defense" and "SOF reconnaissance" as well as "direct action." The brigade headquarters is planned to be operational by September 2012. The brigade will consist of four battalions, the first one being fielded by June 2011. Each battalion will have 18 A-Teams, for a total of 72 A-Teams. The A-Teams are designed along US SOF lines. Each 15-member team is led by a captain, with a first lieutenant executive officer and a team sergeant. In addition, there are two each of medical sergeants,

weapons sergeants, engineer sergeants, and communications sergeants; two intelligence sergeants; an information dissemination sergeant; and a civil-military operations specialist

Structure of the Afghan National Army Special Forces Command (ANASOC)



Afghan Army Units Partnered with NATO Units

In 2010, 70 % of ANA units operated alongside NATO-ISAF units in operations.

Literacy Rate

85 % of ANSF personnel were totally illiterate. As of March 2011, there were also 1,848 Afghan instructors for ANSE, the largest teacher employer in the nation. 95 % of 58,000 ANSF personnel had completed their training by end 2010.

Afghan National Army and Afghan National Police Ethnicity

	Pashtun		Tajik		Hazara		Uzbek		Others	
	ANA	ANP	ANA	ANP	ANA	ANP	ANA	ANP	ANA	ANP
Officers	42	41	41	47	8	4	4	3	5	3
NCO	51	31	36	56	8	6	3	4	1	4
Soldiers	43	47	29	36	12	4	9	6	7	7
Total Force	45	43	32	42	10	5	7	5	5	6
National Avg	44		25		10		8		13	

Annual Fatalities of ANSF since 2007

Year	2007	2008	2009	2010	2011
ANA	209	226	282	1353	540
ANP	803	880	646		

Source: The Long War Journal, May 2011 & Brookings Institute Afghanistan Index, 31 July 2011.

Rohit Singh is an Associate Fellow at CLAWS